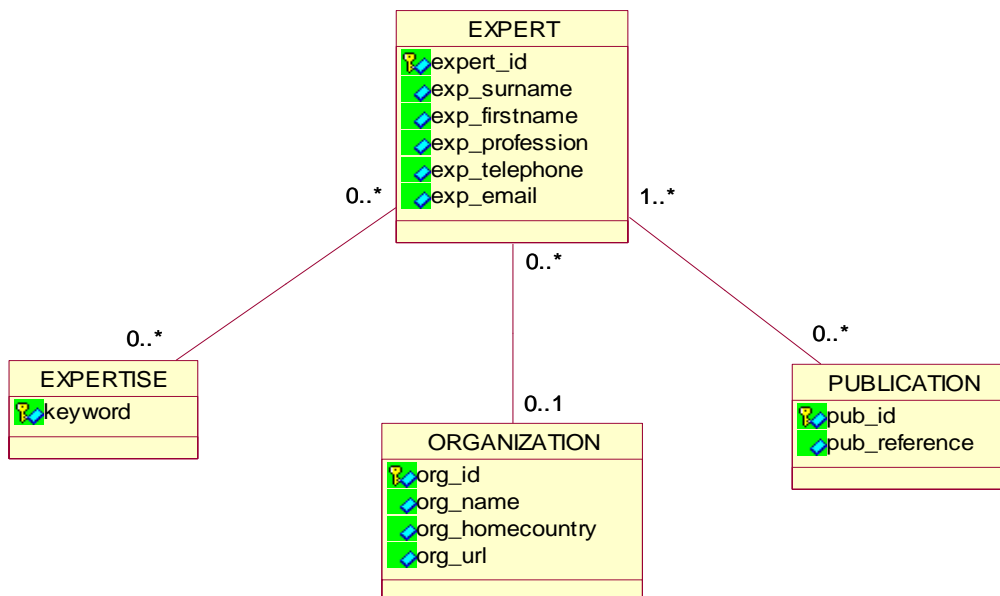


Hands-on Lab

Exercise 1:

1. Transform the example case below into a RDF Schema.
2. Validate the RDF schema using the RDF validator from W3C.
3. Visualize the Schema.
4. Populate your example RDF Schema with data, validate it and visualize it.

Example case: Experts



Reference to publication (pub_reference) will be implemented as XML data type.

Exercise 2:

One of the key ideas of the semantic web technologies are interoperability and reuse. Your task is to:

1. Search for existing publicly available RDF schemas at the schemaweb repository. <http://www.schemaweb.info/default.aspx>
2. Choose one and use it to enrich the schema you created in exercise 1.
3. Populate this new schema with data. Again, be sure to validate the data.